

MANTICORE accelerator board Manual



TABLE OF CONTENTS:

- 1) Disclaimer
- 2) Description
- 3) Installation
- 4) How to use & current state of the core
- 5) ROM/kickstart/OS
- 6) Flashing the board
- 7) Data transfer
- 8) Terms of warranty
- 9) Software installation & support



European Union Regulatory Notice

This product complies with the following EU Directives:

- Low Voltage Directive 2006/95/EC
- EMC Directive 2004/108/EC



1) Disclaimer

The Manticore is an accelerator board for the Amiga© 600. The installation of this product requires the opening of your computer for installation and cable management. Neither the manufacturer nor the reseller can under no circumstances be held responsible for any damage caused during assembly.

The Manticore ships with the Apollo-ROM, no third party copyrighted material is part of this product.

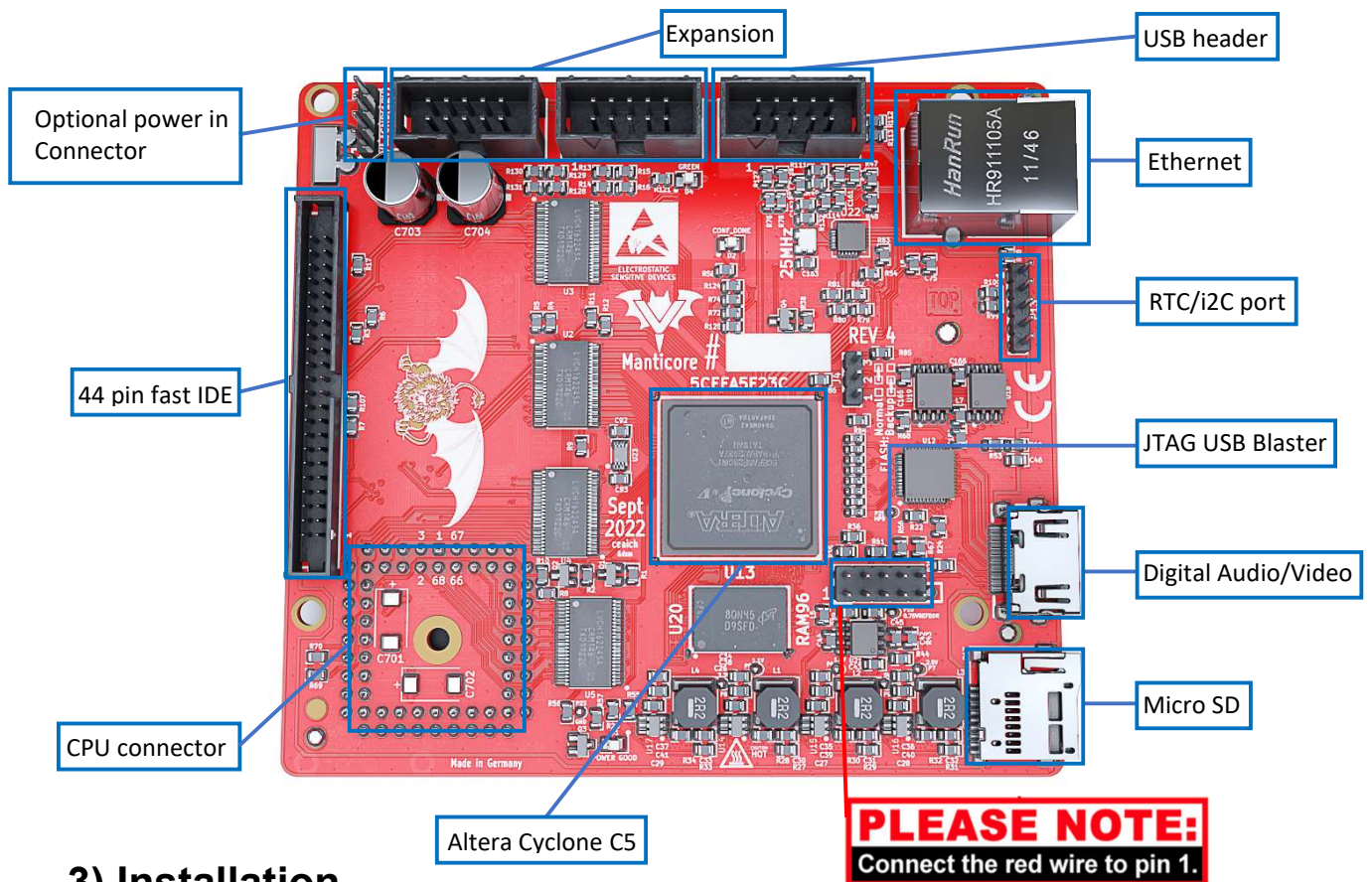
Notice: If you want to dispose of this equipment, please follow your country rules for electronic disposal!

2) Description

The Maticore accelerator board comes with a CF-Adapter and optionally a CF card with preinstalled ApolloOS. The Manticore uses the Apollo core which is compatible with the Motorola 68K processors while outclassing them in performance.

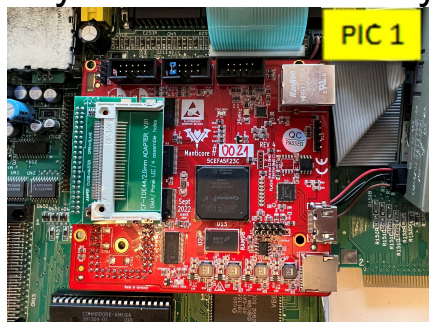
The Manticore is equipped with the following connectors: a micro SD slot, a digital video and audio output, two USB connectors for Joypad and mouse, a RJ45 Ethernet port, 2 expansion ports, a RTC connector, a 44-pin IDE port for mass storage, a JTAG port for updating the core and a PLCC-CPU connector for the Amiga© 600 processor.

The Power connector P12 is only for adding PWR to the Manticore, not for powering other devices (normally not needed).

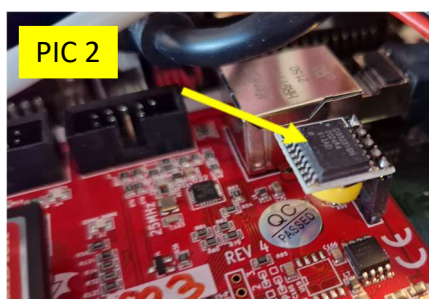


3) Installation

Please be aware, that the components are electrosensitive and must be handled with care. For installation not bend or force the components. Use an anti-static workplace and discharge yourself of your static electricity before you start.

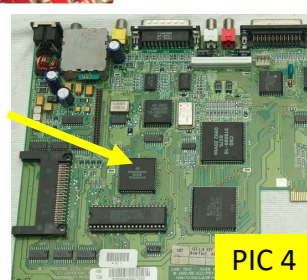
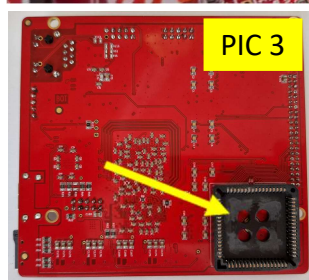


Turn off your Amiga© 600 and disassemble it. Press, with moderate pressure, the supplied CF-adapter onto the IDE port. Either use a soft pad or hold both parts in your hand. Make sure you plug the CF adapter correctly (pin to pin) onto the IDE connector.



Insert the optional RTC module on the corresponding header as shown in PIC 2

The accelerator can now be installed in the Amiga©.



Place the Manticore CPU connector (PIC3) over the Amiga© CPU (PIC4) and press lightly so the accelerator is even, straight and secure.

4) How to use & good to know:

- **Self test:** At power ON, the screen will change color quickly; this is a normal self test of the system and Amiga Mainboard.
- **Ethernet:** DMA accelerated Ethernet; drivers are included in ApolloOS.
- **USB:** The Apollo-computer-shop sells working USB devices. For other USB mice and Joypad look at the periraphel list, at: www.apollo-computer.com.
- **OCS/AGA:** The MANTICORE is shipped as an accelerator card in Super-AGA mode. Running in Super-AGA will allow you to play AGA games, will increase your Chipmemory and thereby removes previous limitation on music and graphic. We are constantly improving these features and also the way to switch between the OCS/ AGA.
- **Boot drives:** boot from IDE/CF. You can also use microSD card for data exchange.

5) ROM/ kickstart / OS

The Manticore comes preinstalled with the latest Apollo-ROM. The Apollo-ROM allows you to run ApolloOS and the latest Coffin distro, by just plugging a CF Card in ☺.

You can also use any other Amiga OS like 3.2 or even Emutos.

We recommend the Apollo bootloader for booting each ROM and OS you want. If you need help, please contact us in discord.

6) Flashing the board

The Manticore accelerator board can be updated to benefit the latest core improvements, such as new features, speed or compatibility improvements.

➔The recommended way to install the FlashRom:

- Go with your Amiga© on the Internet (Ibrowse is in ApolloOS preinstalled)
- Download the **MANTICORE_XX.jic** from:
www.apollo-computer.com/download.html
- Open a CLI on your Amiga©.
- update your system by typing: **ApolloFlash MANTICORE_XX.jic**
- Confirm the operation by typing 'YES' (in CAPS) and RETURN.
- Wait until flashing is finished.
- Power Off your Amiga© and wait 30 seconds.
- Power On your Amiga©.

➔Using the JTAG USB-Blaster: (Only for experts!!!)

The USB blaster allows to flash a core when the card does not boot anymore after a flash error. Please consult the picture to see where and how to connect the JTAG.

Plug in the wrong way, might destroy your board!

7) Data transfer

Micro SD-Slot: You can use the microSD card to transfer files from another computer to the Manticore equipped Amiga©. ApolloOS and some AmigaOS distributions already have the integrated support of the microSD.

Ethernet: The Manticore has ethernet support and drivers preinstalled in ApolloOS. You can use FTP and Web browsers (lbrowse is preinstalled) for data transfer downloads. SMB can be used to mount windows shares. You can use **ApolloExplorer** to copy data to/from the Amiga over network.

USB: USB for Data transfer is not yet supported!

8) Terms of warranty

The Manticore accelerator board comes fully tested and ready to use. Please mind that the electronic components / chips on the Manticore are electrostatic sensitive devices and can be damaged by electrostatic discharge. Only handle the Manticore wearing an ESD protection wrist strap. Any damage due to electrostatic discharge is excluded from the warranty. The Manticore comes with a fully tested IDE-CF adapter. Usage of other adapter or devices is on the risk of the user. Mind that wrong inserting/plugin of IDE-adapters or Expansions can cause an electronic shock harming the device. Any mechanical or electrical damage to card is excluded from the warranty.

9) Software installation & support

- Visit our homepage <http://www.apollo-computer.com> to be informed about the whole Apollo-Family and use **support** to find the latest core, ApolloOS image and e.g., video guides.
- On <http://www.apollo-core.com> developers find many useful information for coding. In the **FORUM** FAQ are answered and you find information about many different Amiga topics.
- If you need help, don't hesitate to contact us. We invite you in our **discord-channel**, which is specially created for Manticore users. Here is the link <https://discord.gg/D9gQpXgE6y>

The contents of this manual are subject to change without notice. Copyright© 2023 Gunnar von Boehn.